

## Concerning Counterfeit DRAM Products

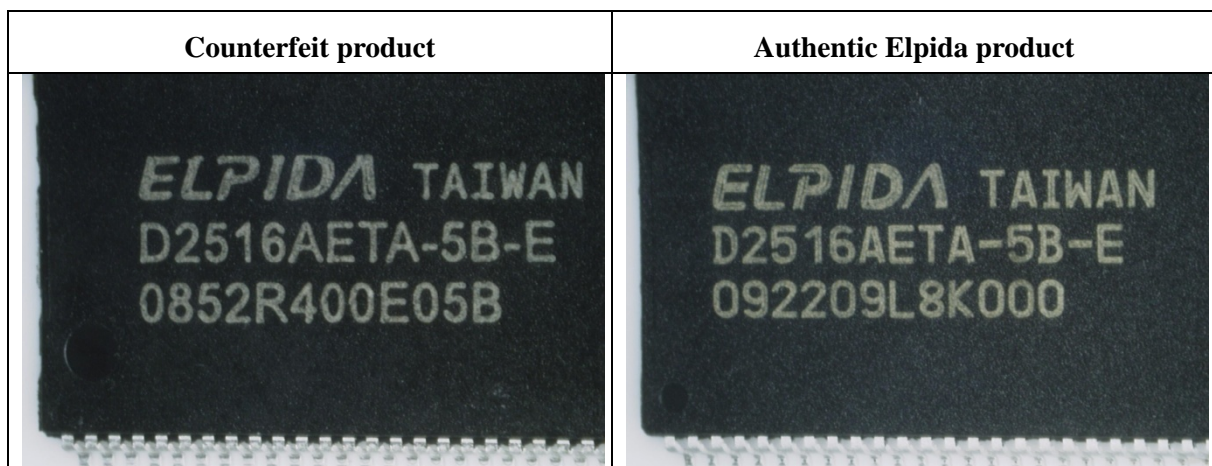
Dear Customer:

Thank you for your interest in and your use of Elpida products.

We have recently discovered that counterfeit copies of Elpida products are circulating in some overseas markets. Some customers who have used these counterfeits have reported problems with performance and product quality.

### Example of a Counterfeit Product

Below is a side-by-side comparison of a counterfeit and an actual Elpida product. The logo and manufacturing country (top line), the product code (middle line), the lot number stamp (bottom line) and the external appearance of the product packaging for both products are very similar. At a quick glance it appears difficult to distinguish between the authentic Elpida product and the counterfeit (one difference, however, is that the lot number for the counterfeit product does not exist).



Customers who purchase or use Elpida products should exercise caution in order to avoid problems with counterfeits. Questions about the identity or source of Elpida products should be directed to one of our regional sales offices. Information about how to contact an Elpida sales office is available at the following website: [www.elpida.com/en/contacts.html](http://www.elpida.com/en/contacts.html).

Please understand that Elpida cannot take responsibility for any accidents or problems caused by the use of counterfeit products.

We thank you for your support and look forward to continuing to supply you with authentic top-quality Elpida products.