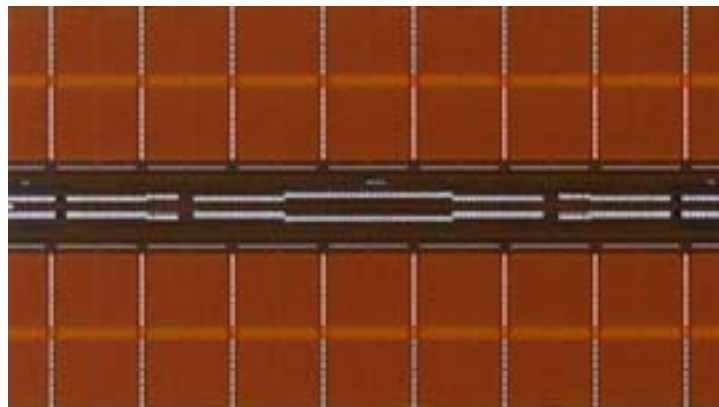


FOR IMMEDIATE RELEASE

Elpida Completes Development of 1-Gigabit GDDR5

A World-Class Operating Speed of 6Gbps



Tokyo/Japan, Munich/Germany, November 19, 2009 – Elpida Memory, Inc. (TOKYO: 6665), Japan’s leading global supplier of Dynamic Random Access Memory (DRAM), today announced that it had developed a 1-gigabit GDDR5 (product name: EDW1032BABG) that operates at a world-class high speed of 6Gbps. The new graphic memory (GDDR: Graphics Double Data Rate) device marks Elpida’s first successful step in the GDDR market.

Applications for GDDR memory devices used with GPU (Graphics Processing Unit) are found not only in such graphic processing equipment as game consoles and PC graphics cards but also in equipment that require high-performance computing for use in such areas as science and technology, physical simulation, digital image processing and video conversion.

In August Elpida announced plans to enter the graphics DRAM business based on its acquisition of GDDR design assets from the German company Qimonda AG. The successful development of the new GDDR product in only three months using these design assets was made possible by close cooperation between Elpida’s new Munich Design Center in Germany, an Elpida Japan-based technology team and engineers at Taiwan-based Winbond Electronics Corporation.

After concluding an evaluation at the Munich Design Center, sample shipments will start in December and mass production is expected to begin in the second quarter (April-June) of CY 2010.

Elpida is now involved in all areas of the DRAM market – commodity DRAMs, GDDR for the graphics

market, high-speed XDR™ DRAM and Mobile RAM™ for mobile equipment. By becoming one of the few full-range suppliers Elpida expects to play an increasingly important role in the DRAM market with its “total memory solutions” approach.

1-gigabit GDDR5 Overview

| | |
|------------------|---|
| Product name | EDW1032BABG |
| Memory density | 1-gigabit |
| Speed | 6Gbps |
| Configuration | 32-megabit x32 / (64-megabit x16) |
| Special features | - Two I/O configurations –x32 and x16 – customers can use in a variety of systems - To save mass manufacturing testing costs Elpida’s proprietary test method is used, making an ultra-high speed tester unnecessary |

About Elpida

Elpida Memory, Inc. (Tokyo: 6665) is a leading manufacturer of Dynamic Random Access Memory (DRAM) integrated circuits. The company’s design, manufacturing and sales operations are backed by world class technological expertise. Its 300mm manufacturing facilities, consisting of its Hiroshima Plant and a Taiwan-based joint venture, Rexchip Electronics, utilize the most advanced manufacturing technologies available. Elpida’s portfolio features such characteristics as high-density, high-speed, low power and small packaging profiles. The company provides DRAM solutions across a wide range of applications, including high-end servers, mobile phones and digital consumer electronics. More information can be found at <http://www.elpida.com>.

Mobile RAM is a trademark of Elpida Memory, Inc.

XDR is a trademark of Rambus Inc. All other trade names are the service marks, trademarks, or registered trademarks of their respective owners.

Information in this news release is current as of the timing of the release, but may be revised later without notice.

Elpida Press Contact:

Hiroshi Tsuboi

Elpida Memory, Inc. (Japan)

Tel: +81-3-3281-1648

E-mail: press@elpida.com

###